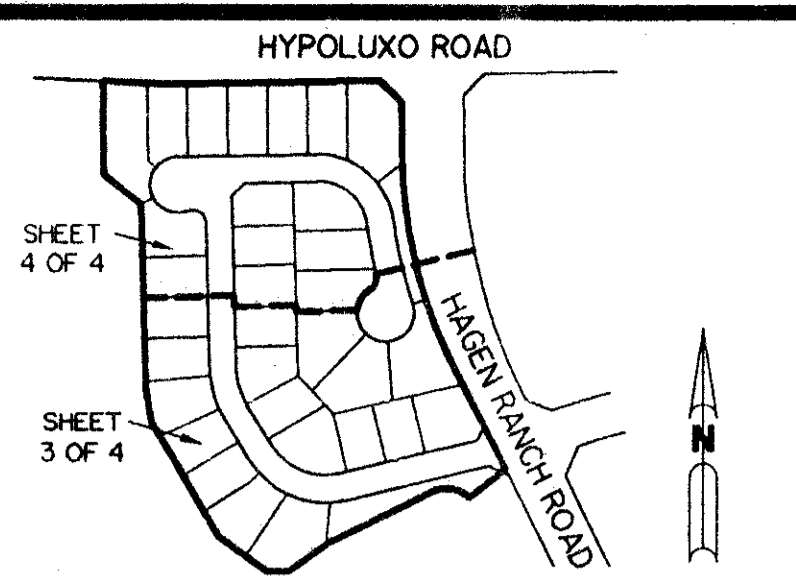


A PART OF LAKE CHARLESTON PLANNED UNIT DEVELOPMENT

LAKE CHARLESTON - TRACT "CC"

BEING A REPLAT OF ALL OF CHURCH TRACT 1 AND BUFFER TRACT 1 AS SHOWN ON LAKE CHARLESTON PLAT NO. 3 AS RECORDED IN PLAT BOOK 62, PAGES 55 THROUGH 68, INCLUSIVE, OF THE PUBLIC RECORDS OF PALM BEACH COUNTY, FLORIDA, AND A PORTION OF TRACTS 1, 2, 31, 32 AND A PORTION OF ABANDONED ROAD RIGHT OF WAY, BLOCK 41, PALM BEACH FARMS COMPANY PLAT NO. 3 AS RECORDED IN PLAT BOOK 2, PAGES 45 THROUGH 54, INCLUSIVE, OF SAID PALM BEACH COUNTY PUBLIC RECORDS. LYING IN SECTIONS 4 AND 9, TOWNSHIP 45 SOUTH, RANGE 42 EAST

SHEET 2 OF 4 MARCH 1995



KEY MAP
N.T.S.

MORTGAGEE'S CONSENT

STATE OF CALIFORNIA
COUNTY OF LOS ANGELES
THE UNDERSIGNED HEREBY CERTIFIES THAT IT IS THE HOLDER OF A MORTGAGE, UPON THE PROPERTY DESCRIBED HEREON AND DOES HEREBY JOIN IN AND CONSENT TO THE DEDICATION OF THE LAND DESCRIBED IN SAID DEDICATION BY THE OWNER THEREOF AND AGREES THAT ITS MORTGAGES WHICH ARE RECORDED IN OFFICIAL RECORD BOOK 6537 AT PAGE 1155 OF THE PUBLIC RECORDS OF PALM BEACH COUNTY, FLORIDA, SHALL BE SUBORDINATE TO THE DEDICATION SHOWN HEREON.

IN WITNESS WHEREOF, THE SAID MORTGAGEE HAS HEREUNTO SET ITS HAND AND SEAL AS OF THIS 20th DAY OF MARCH, 1995.

TCW SPECIAL CREDITS FUND III,
A CALIFORNIA LIMITED PARTNERSHIP

BY: TCW SPECIAL CREDITS,
(A CALIFORNIA GENERAL PARTNERSHIP)
GENERAL PARTNER

WITNESSES:

Mikka Scott
MIKKA SCOTT
Melissa Dold
MELISSA DOLD

BY: TCW ASSET MANAGEMENT COMPANY,
ITS MANAGING GENERAL PARTNER

BY: *Richard Masson*
RICHARD MASSON
MANAGING DIRECTOR
BY: *Kenneth Liang*
KENNETH LIANG
VICE PRESIDENT

COMMON FUND FOR BOND INVESTMENT,
A NEW YORK NOT-FOR-PROFIT CORPORATION

BY: TCW SPECIAL CREDITS,
(A CALIFORNIA GENERAL PARTNERSHIP)
INVESTMENT MANAGER

WITNESSES:

Mikka Scott
MIKKA SCOTT
Melissa Dold
MELISSA DOLD

BY: TCW ASSET MANAGEMENT COMPANY,
ITS MANAGING GENERAL PARTNER

BY: *Richard Masson*
RICHARD MASSON
MANAGING DIRECTOR
BY: *Kenneth Liang*
KENNETH LIANG
VICE PRESIDENT

WEYERHAEUSER COMPANY MASTER RETIREMENT TRUST
A/K/A WEYERHAEUSER COMPANY MASTER PENSION TRUST,
A CORPORATE PENSION PLAN SUBJECT TO ERISA

BY: TCW SPECIAL CREDITS,
(A CALIFORNIA GENERAL PARTNERSHIP)
INVESTMENT MANAGER

BY: TCW ASSET MANAGEMENT COMPANY,
ITS MANAGING GENERAL PARTNER

WITNESSES:

Mikka Scott
MIKKA SCOTT
Melissa Dold
MELISSA DOLD

BY: *Richard Masson*
RICHARD MASSON
MANAGING DIRECTOR

BY: *Kenneth Liang*
KENNETH LIANG
VICE PRESIDENT

TCW SPECIAL CREDITS TRUST, A COLLECTIVE TRUST
ORGANIZED UNDER THE LAWS OF CALIFORNIA

BY: TRUST COMPANY OF THE WEST,
(A CALIFORNIA CORPORATION)
TRUSTEE

WITNESSES:

Mikka Scott
MIKKA SCOTT
Melissa Dold
MELISSA DOLD

BY: *Richard Masson*
RICHARD MASSON
MANAGING DIRECTOR

BY: *Kenneth Liang*
KENNETH LIANG
VICE PRESIDENT

TCW SPECIAL CREDITS FUND IIIb,
A CALIFORNIA LIMITED PARTNERSHIP

BY: TCW SPECIAL CREDITS,
(A CALIFORNIA GENERAL PARTNERSHIP)
GENERAL PARTNER

WITNESSES:

Mikka Scott
MIKKA SCOTT
Melissa Dold
MELISSA DOLD

BY: TCW ASSET MANAGEMENT COMPANY,
ITS MANAGING GENERAL PARTNER

BY: *Richard Masson*
RICHARD MASSON
MANAGING DIRECTOR
BY: *Kenneth Liang*
KENNETH LIANG
VICE PRESIDENT

TCW SPECIAL CREDITS TRUST IIIb, A COLLECTIVE
INVESTMENT TRUST ORGANIZED UNDER THE LAWS OF
CALIFORNIA

WITNESSES:

Mikka Scott
MIKKA SCOTT
Melissa Dold
MELISSA DOLD

BY: TRUST COMPANY OF THE WEST
(A CALIFORNIA CORPORATION),
TRUSTEE

BY: *Richard Masson*
RICHARD MASSON
MANAGING DIRECTOR

BY: *Kenneth Liang*
KENNETH LIANG
VICE PRESIDENT

DELAWARE STATE EMPLOYEES RETIREMENT FUND
A/K/A DELAWARE STATE EMPLOYEES PENSION PLAN,
A STATE FUND SUBJECT TO PERISA

BY: TCW SPECIAL CREDITS,
(A CALIFORNIA GENERAL PARTNERSHIP)
INVESTMENT MANAGER

WITNESSES:

Mikka Scott
MIKKA SCOTT
Melissa Dold
MELISSA DOLD

BY: TCW ASSET MANAGEMENT COMPANY,
ITS MANAGING GENERAL PARTNER

BY: *Richard Masson*
RICHARD MASSON
MANAGING DIRECTOR
BY: *Kenneth Liang*
KENNETH LIANG
VICE PRESIDENT

ACKNOWLEDGEMENT

STATE OF CALIFORNIA
COUNTY OF LOS ANGELES

THE FOREGOING INSTRUMENT WAS ACKNOWLEDGED BEFORE ME THIS 20th DAY OF MARCH, 1995, BY KENNETH LIANG AND RICHARD MASSON, RESPECTIVELY OF TCW ASSET MANAGEMENT COMPANY, A MANAGING GENERAL PARTNER OF TCW SPECIAL CREDITS, A GENERAL PARTNER OF TCW SPECIAL CREDITS FUND III AND TCW SPECIAL CREDITS FUND IIIb. EACH IS PERSONALLY KNOWN TO ME.

Debra A. Huber
NOTARY PUBLIC
COMMISSION EXPIRATION DATE 3/21/97

ACKNOWLEDGEMENT

STATE OF CALIFORNIA
COUNTY OF LOS ANGELES

THE FOREGOING INSTRUMENT WAS ACKNOWLEDGED BEFORE ME THIS 20th DAY OF MARCH, 1995, BY KENNETH LIANG AND RICHARD MASSON, RESPECTIVELY OF TCW ASSET MANAGEMENT COMPANY, A MANAGING GENERAL PARTNER OF TCW SPECIAL CREDITS, WHICH IS THE INVESTMENT MANAGER OF THE COMMON FUND FOR BOND INVESTMENT, AND WEYERHAEUSER COMPANY MASTER RETIREMENT TRUST, DELAWARE STATE EMPLOYEE RETIREMENT FUND. EACH IS PERSONALLY KNOWN TO ME.

Debra A. Huber
NOTARY PUBLIC
COMMISSION EXPIRATION DATE 3/21/97

ACKNOWLEDGEMENT

STATE OF CALIFORNIA
COUNTY OF LOS ANGELES

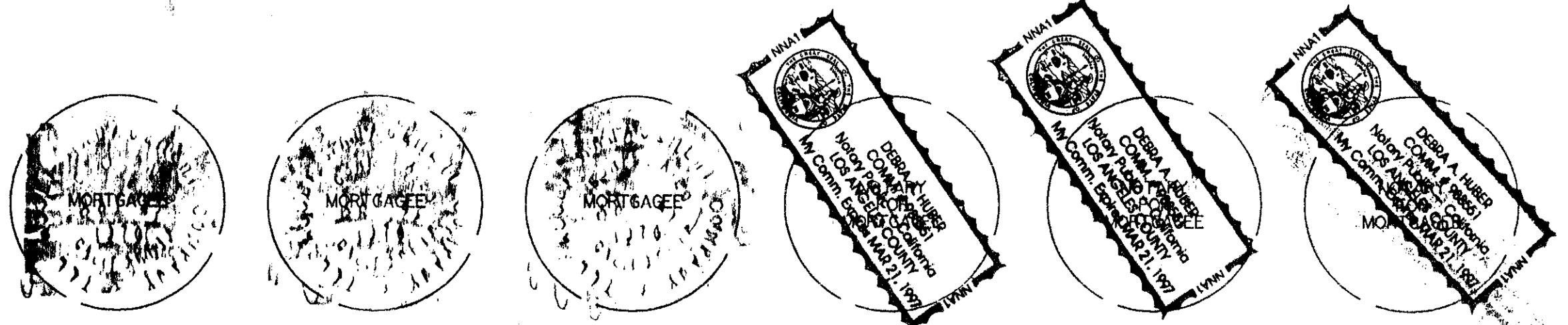
THE FOREGOING INSTRUMENT WAS ACKNOWLEDGED BEFORE ME THIS 20th DAY OF MARCH, 1995, BY KENNETH LIANG AND RICHARD MASSON, RESPECTIVELY OF TRUST COMPANY OF THE WEST, A TRUSTEE OF TCW SPECIAL CREDITS TRUST AND TCW SPECIAL CREDITS TRUST IIIb. EACH IS PERSONALLY KNOWN TO ME.

Debra A. Huber
NOTARY PUBLIC
COMMISSION EXPIRATION DATE 3/21/97

PET. 86-96D
ALOC. #0001
5/2/2/I

SUBDIVISION * Lake Charleston
Tract "CC"
BOOK 75 PAGE 73
FLOOD ZONE B FLOOD MAP # 185A
QUAD # 49 ZONING KTS
SE 26-96 ZIP CODE 33467
PUD NAME *Sam* 9/45/42

TAZ 437



THIS INSTRUMENT PREPARED BY
WILBUR F. DIVINE, P.L.S. 4190, STATE OF FLORIDA
LAWSON, NOBLE AND ASSOCIATES, INC.
ENGINEERS PLANNERS SURVEYORS
WEST PALM BEACH, FLORIDA

0533-031

75/73

LAKE CHARLESTON-TRACT "CC" SHEET 2 OF 4